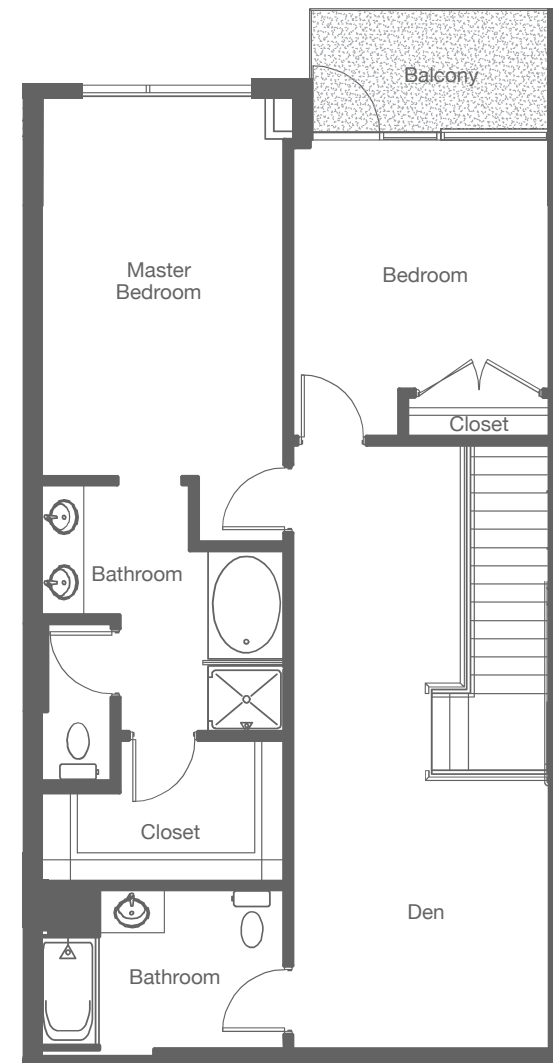
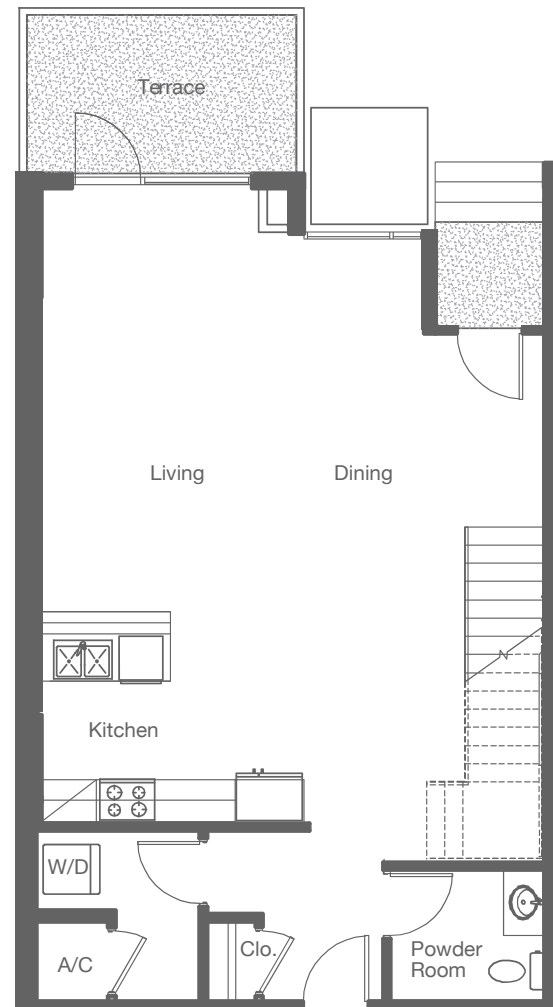




JUHL

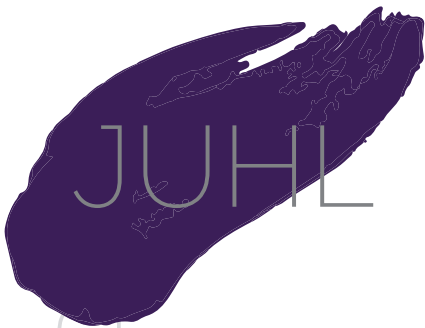


BB1893

Residence #121, 125, 129

JuhlLV.com | 702-816-5466
353 E Bonneville Ave
Las Vegas, NV 89101

FLOOR PLANS ARE SUBJECT TO CHANGE WITHOUT NOTICE AND ARE FOR PRESENTATION PURPOSES ONLY AS THEY ARE NOT TO SCALE. ALL DIMENSIONS AND SQUARE FOOTAGES ARE APPROXIMATE AND MAY VARY DUE TO UNIQUENESS OF THE BUILDING DESIGN AND CONFIGURATION AND NO REPRESENTATION IS MADE AS TO THE ACCURACY OF SUCH FIGURES. DK LAS VEGAS LLC COMMUNITY.  NORTHCAP 



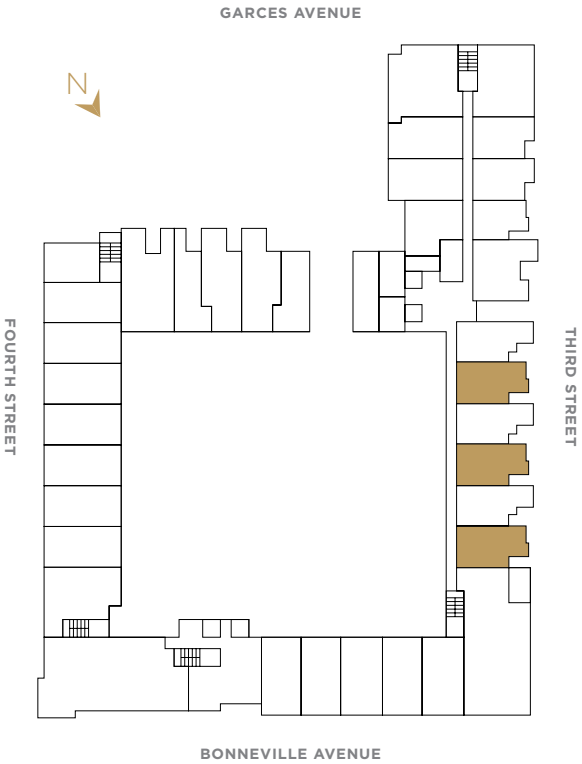
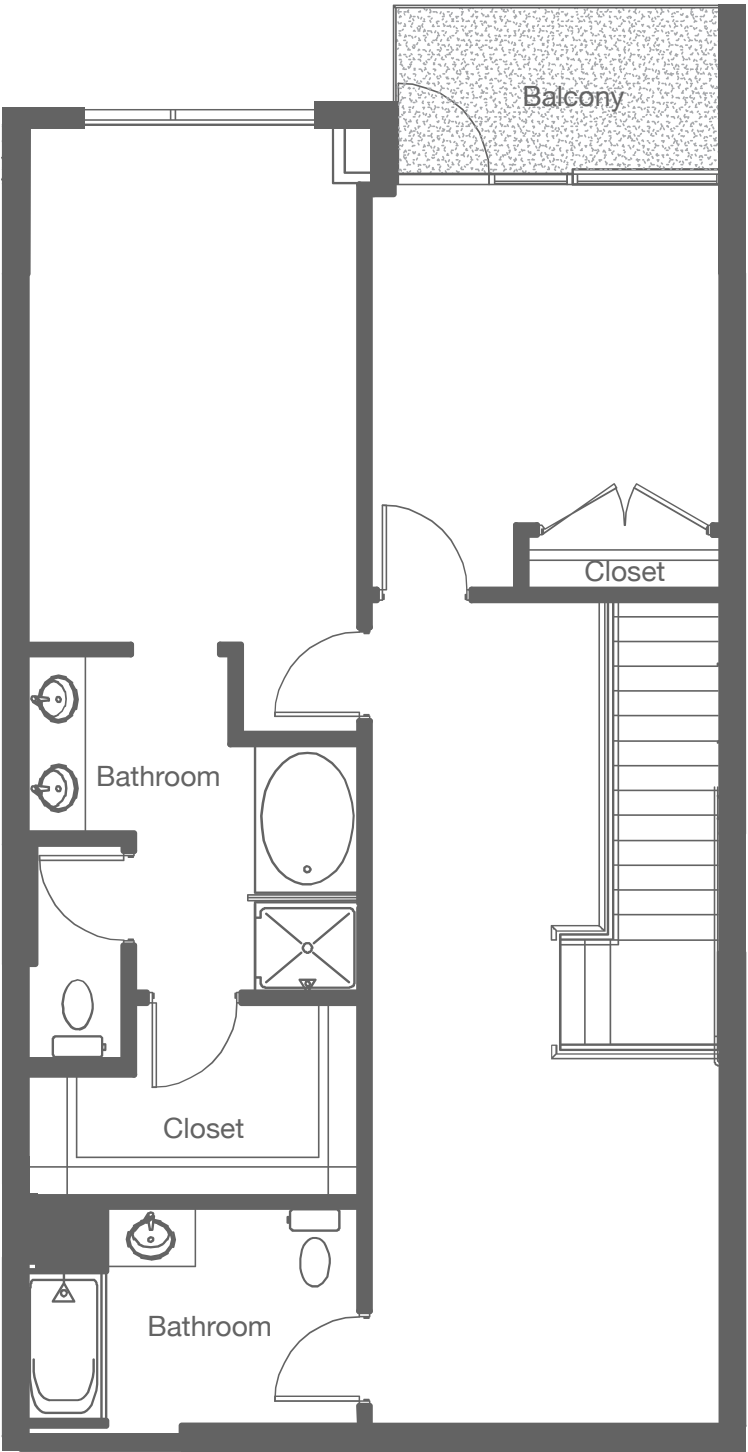
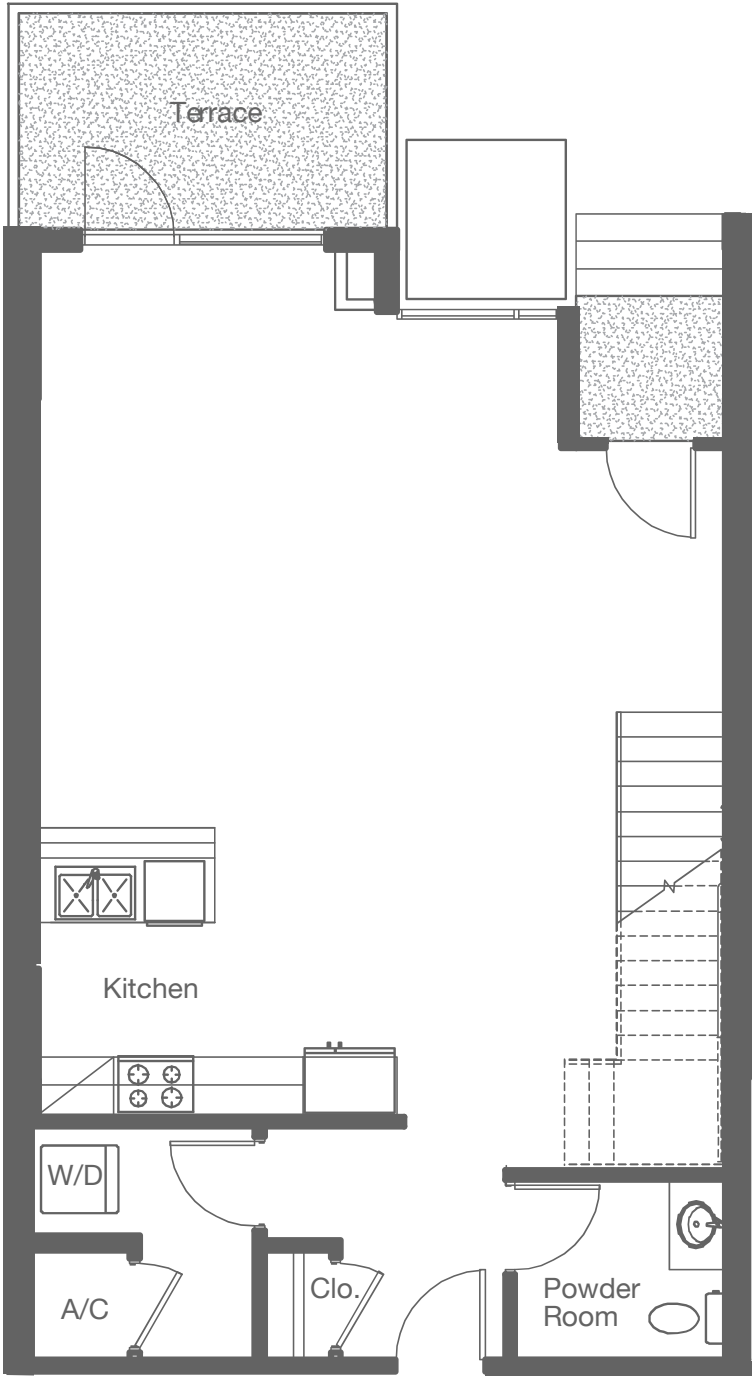
JUHL

Create Your Own Canvas

BB1893

Residence #121, 125, 129

2.5 Baths | 1,893 - 1,894 Square Feet



NOTES

