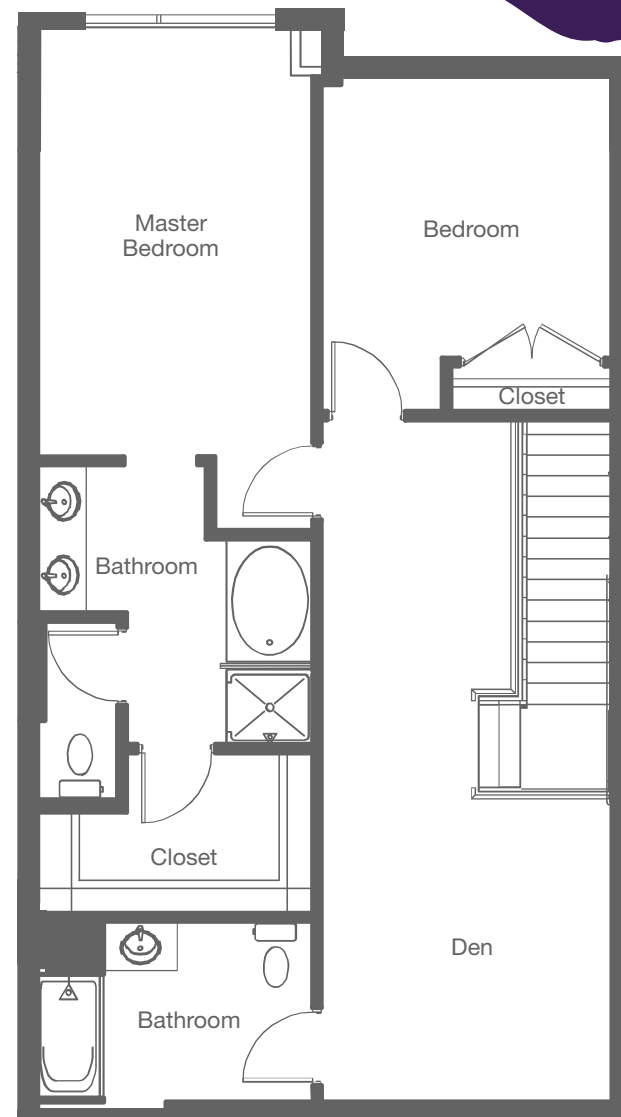
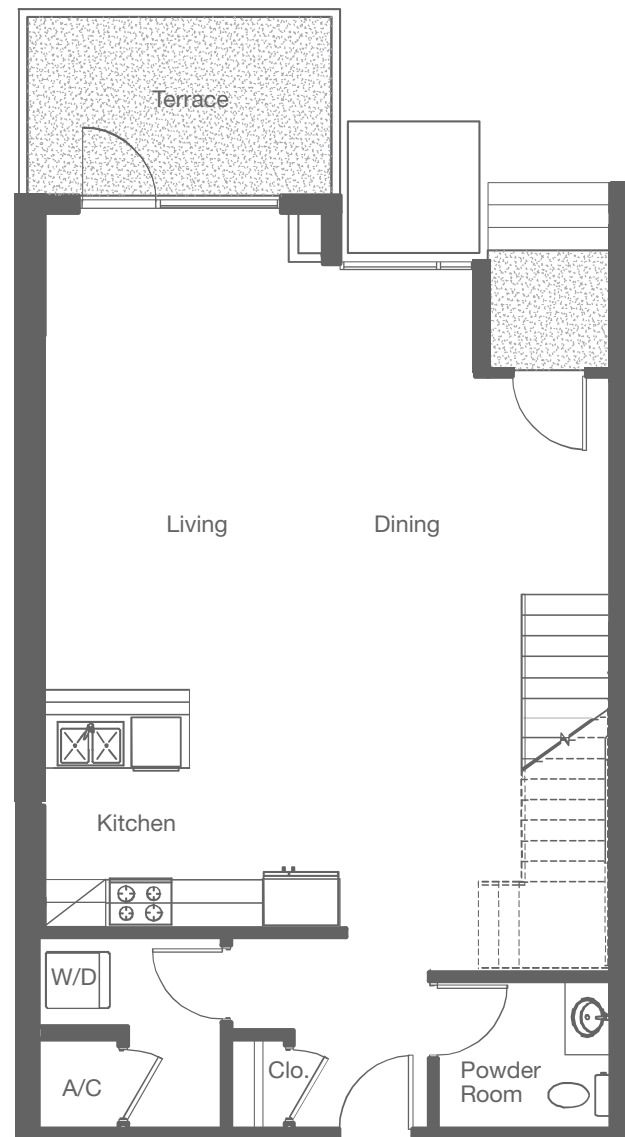




JUHL

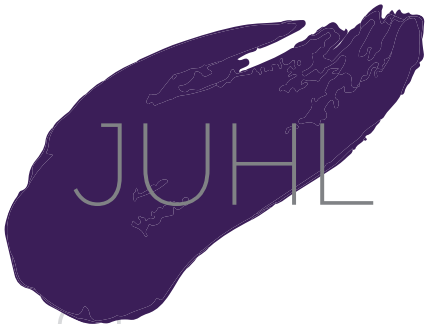


BB1833

Residence #123, 127, 131

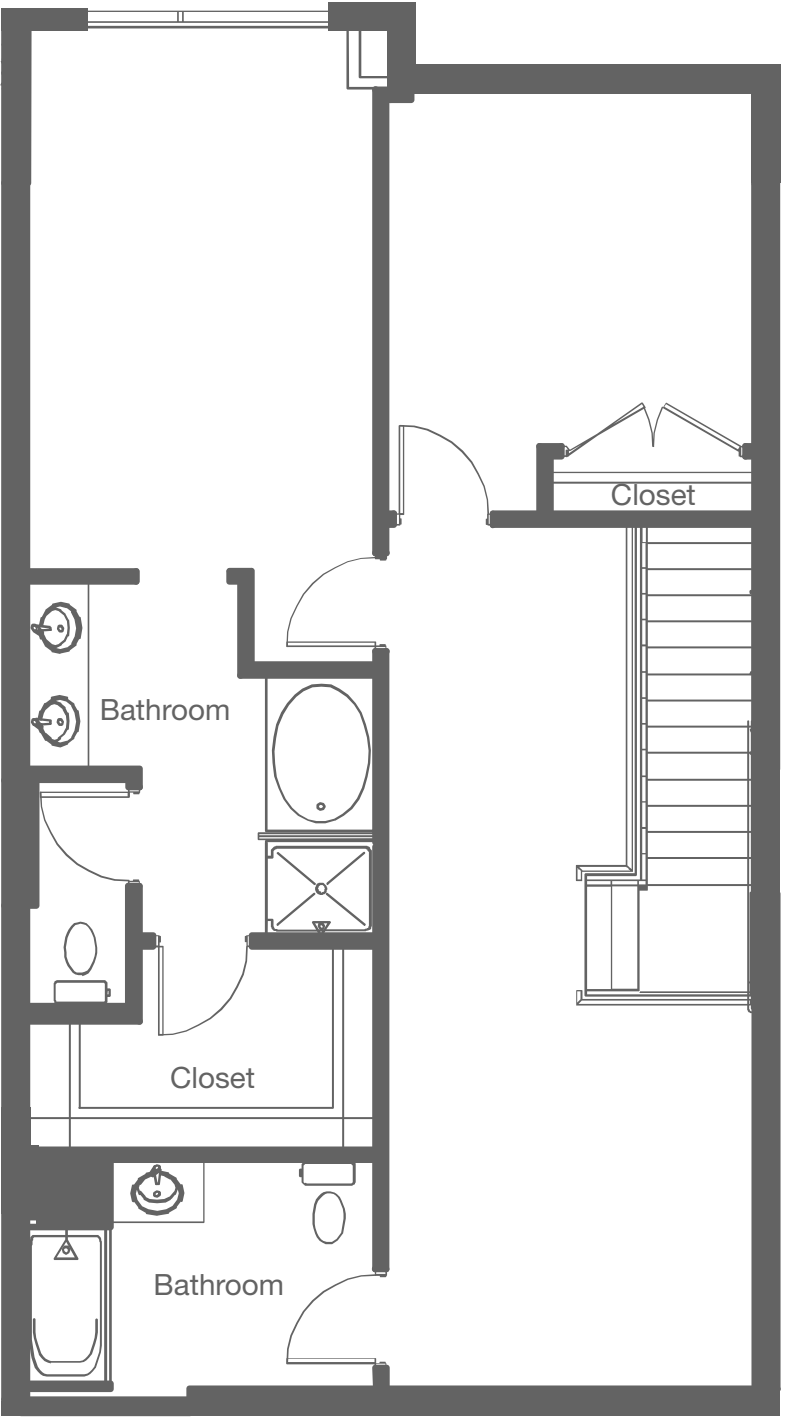
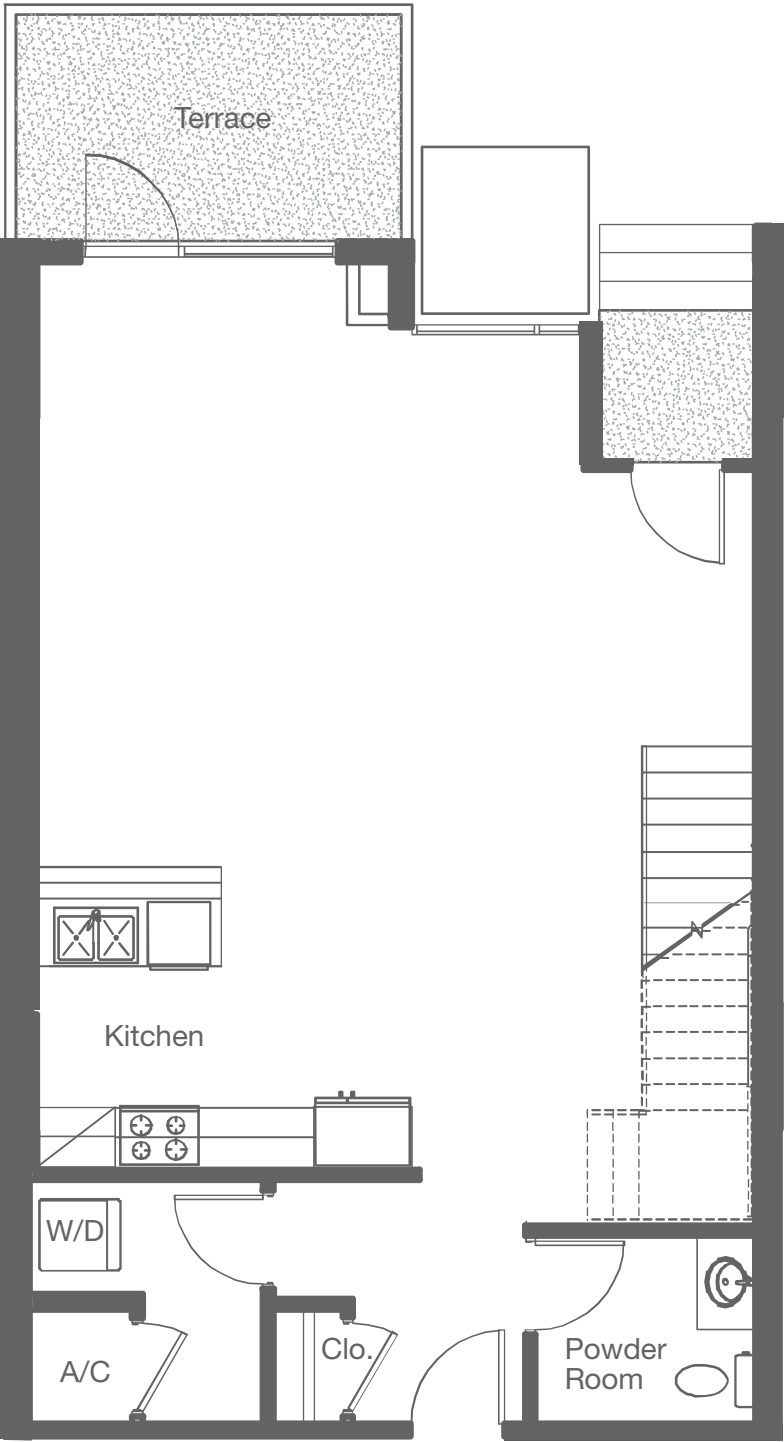
JuhlLV.com | 702-816-5466
353 E Bonneville Ave
Las Vegas, NV 89101

FLOOR PLANS ARE SUBJECT TO CHANGE WITHOUT NOTICE AND ARE FOR PRESENTATION PURPOSES ONLY AS THEY ARE NOT TO SCALE. ALL DIMENSIONS AND SQUARE FOOTAGES ARE APPROXIMATE AND MAY VARY DUE TO UNIQUENESS OF THE BUILDING DESIGN AND CONFIGURATION AND NO REPRESENTATION IS MADE AS TO THE ACCURACY OF SUCH FIGURES. DK LAS VEGAS LLC COMMUNITY.  NORTHCAP 



JUHL

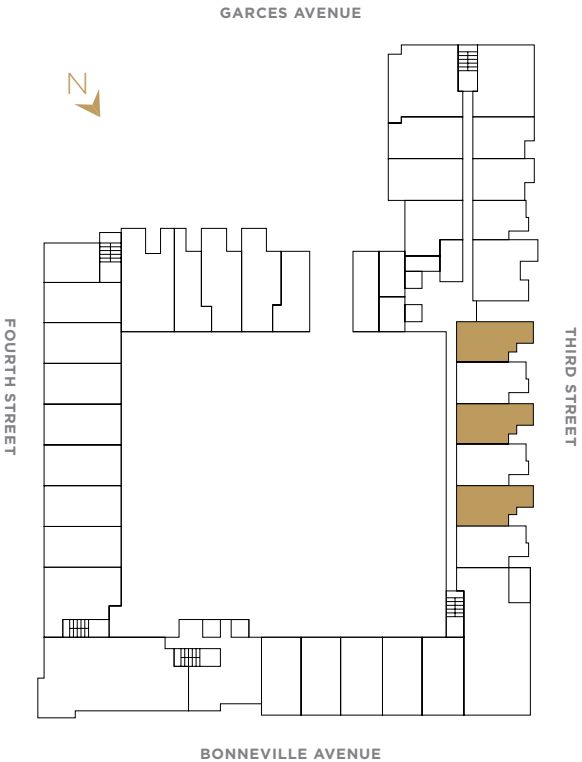
Create Your Own Canvas



BB1833

Residence #123, 127, 131

2.5 Baths | 1,825 - 1,833 Square Feet



NOTES

